



Agriculture, Forestry and Other Land Use Working Group

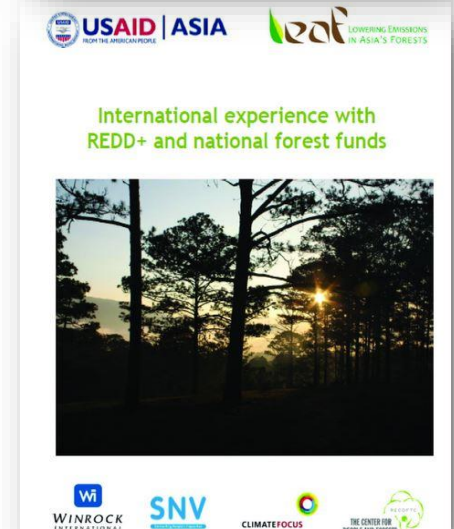
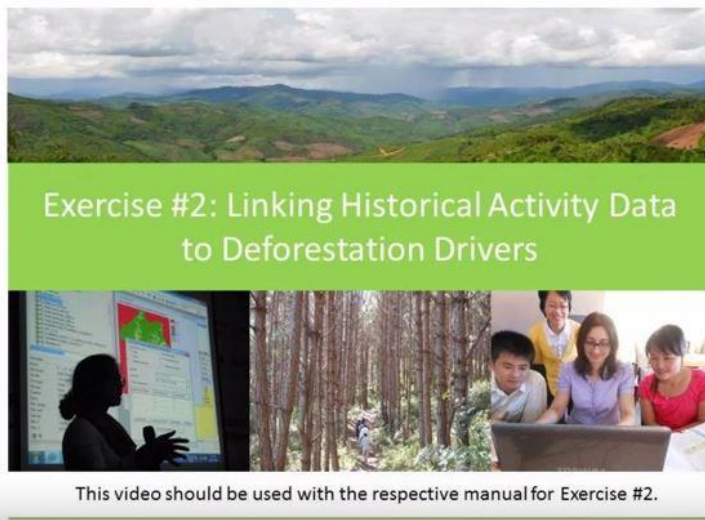
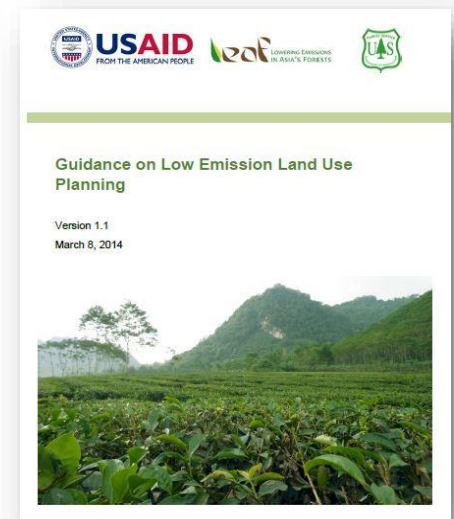
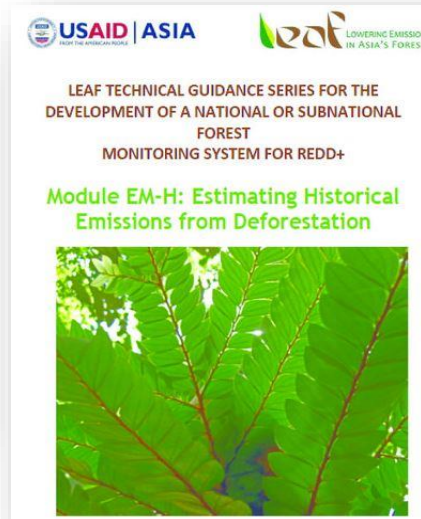
Robert O'Sullivan, AFOLU WG Co-Chair, Winrock International
Africa LEDS Partnership Annual Event
Climate Change and Development in Africa: Unlocking LEDS implementation on the African Continent
03 -05 October 2017, Abidjan, Côte d'Ivoire

About the AFOLU WG



- AFOLU WG SC: Winrock International (secretariat), USAID, UNDP, US Forest Service, FAO, United States Department of Agriculture, SilvaCarbon, The Center for People and Forests (RECOFTC), Center for International Forestry Research (CIFOR), Lutheran World Relief; coordinates with regional platforms
- Technical analysis, reports
 - “The Relationship between LEDS and REDD+: Case studies from Peru and Guatemala”
 - Analysis of treatment of AFOLU in INDCs
 - “Conceptual framework for low emission resilient rural development” (under development for LAC)
 - “Financing AFOLU Mitigation Activities: Matching Project to Finance in an NDC and LEDS Context” (forthcoming)
- Webinars
 - “Aligning land-use investment with climate commitments in Cote d’Ivoire”
- REAL support (currently occurring for Malawi)
- 2017 – 2018 aim to focus more on technical assistance

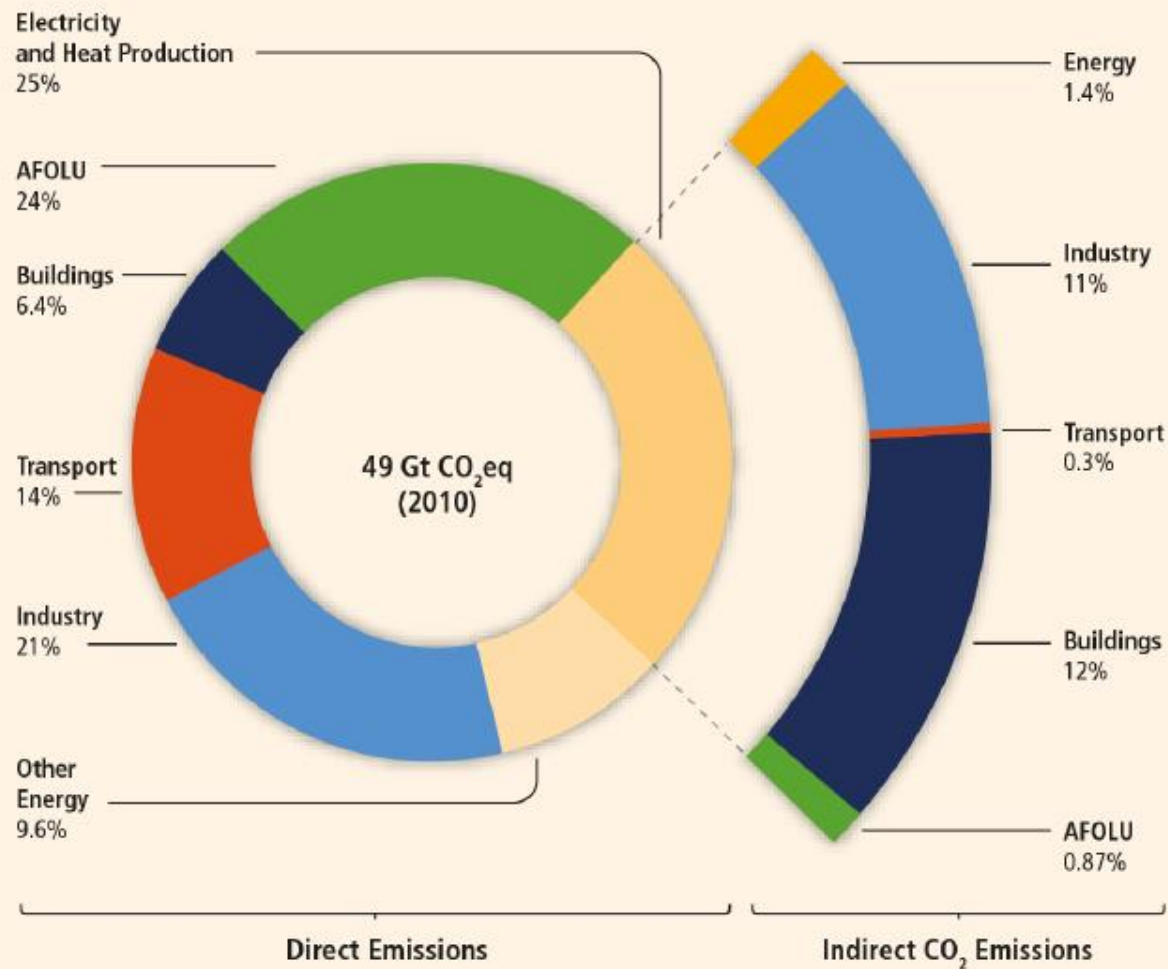
AFOLU WG TOOLS



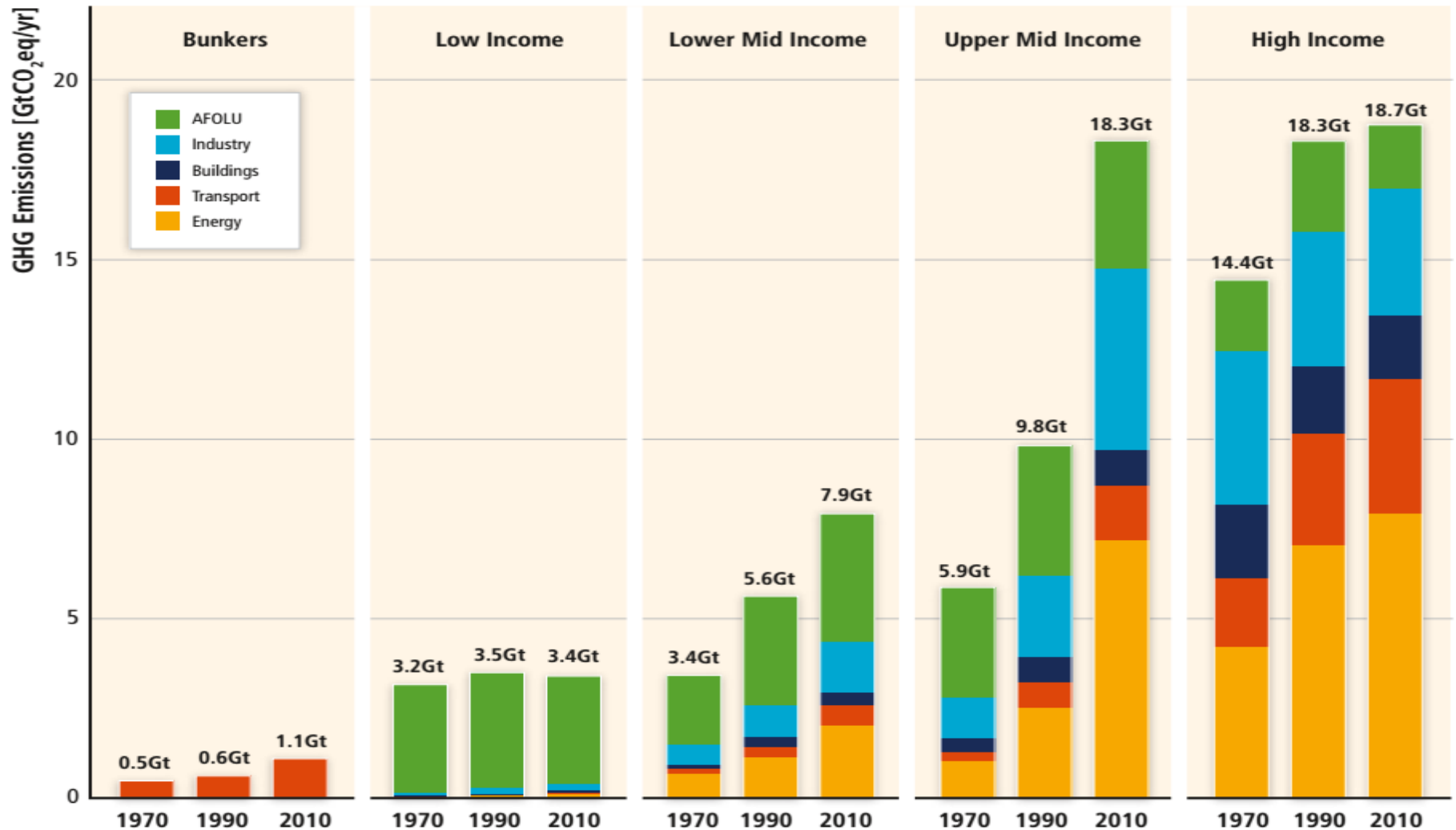
Please visit http://ledsgp.org/Agriculture_Work_Space/Tools

AFOLU: Global Perspective

Greenhouse Gas Emissions by Economic Sectors



AFOLU: Global Perspective



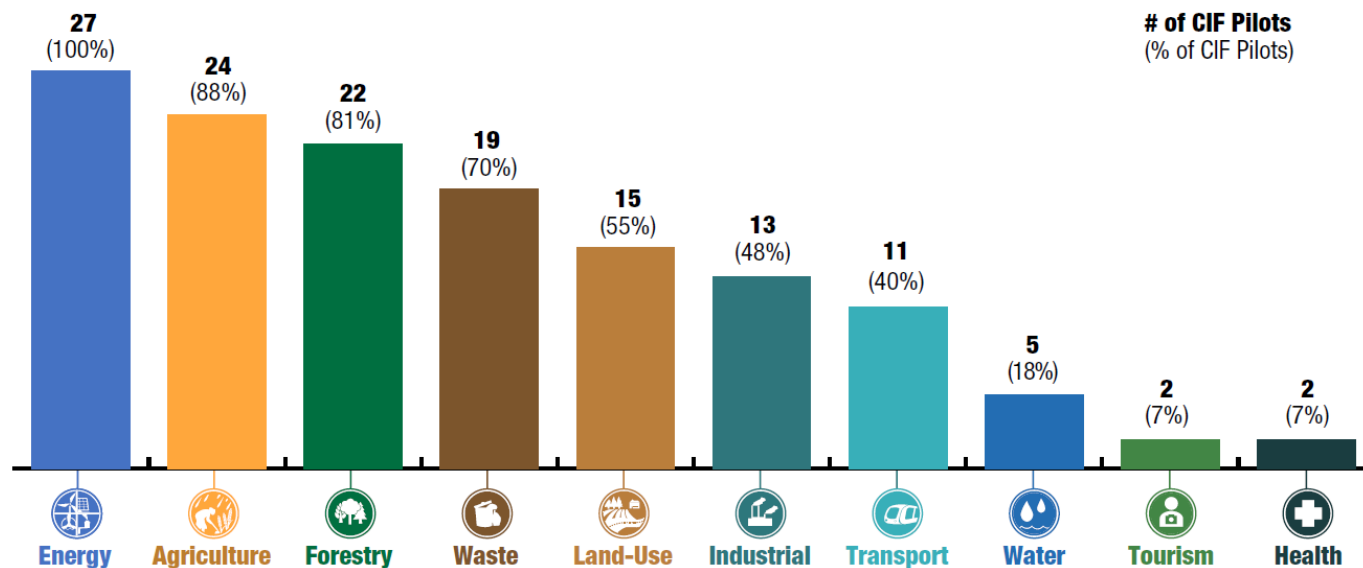
AFOLU Global Perspective



- Paris Agreement built on Intended Nationally Determined Contributions (now NDCs)
- NDC do not get us to 2°C – need to increase ambition
- Scope of NDCs varied – particularly on treatment of land use and agriculture
- Completed INDC analysis for select countries in Asia and Latin America
- AfDB and CIF completed analysis in Africa

AFOLU in African NDCs

MAJOR SECTORS CIF PILOT COUNTRIES HAVE INDICATED AS ACTIONS UNDER THE PARIS AGREEMENT



Source: "Transitioning from INDCs to NDCs in Africa", AfDB CIF Knowledge Series, 2015

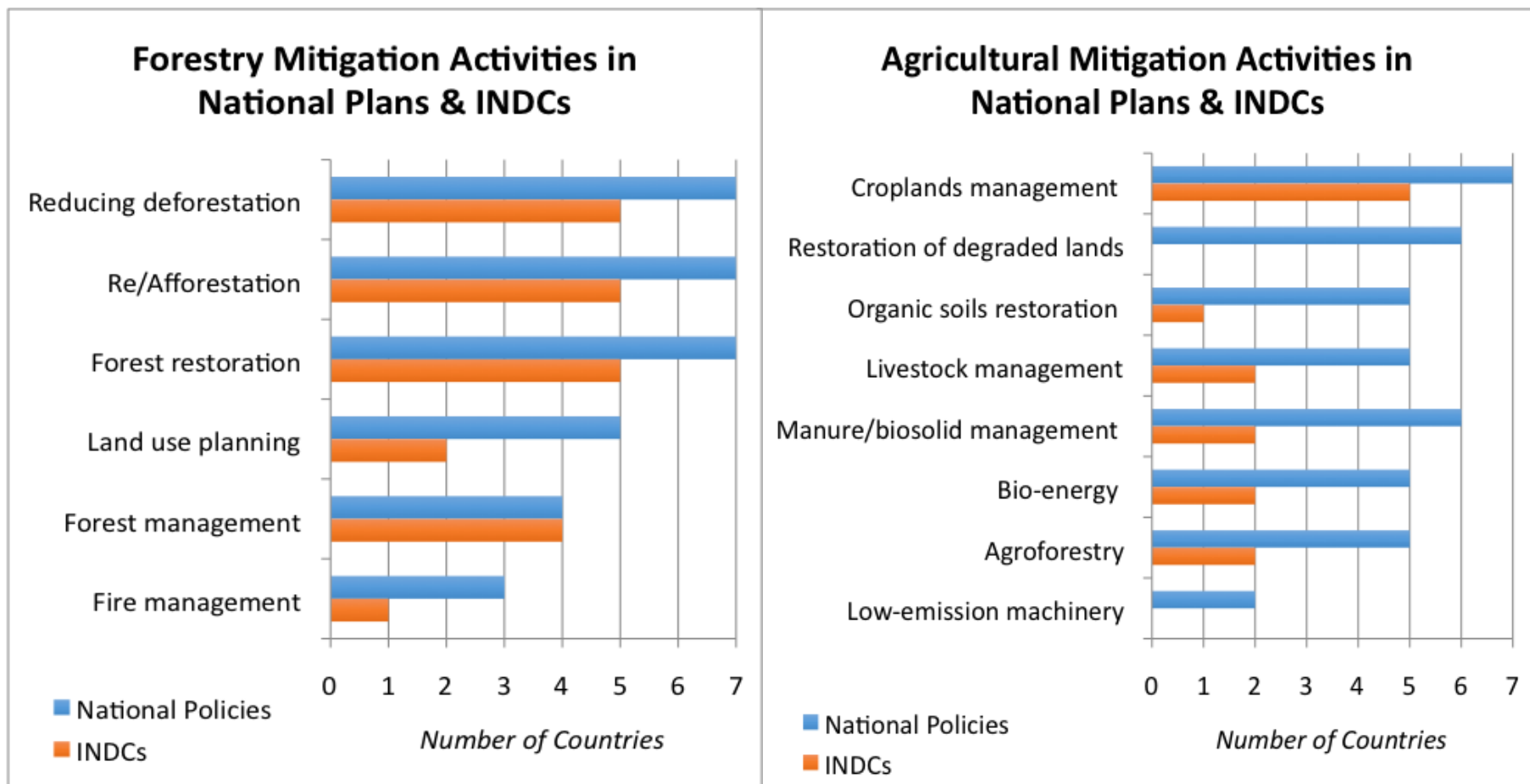
https://www.afdb.org/fileadmin/uploads/afdb/Documents/Publications/AfDB-CIF-Transitioning_fromINDCs_to_NDC-report-November2016.pdf

AFOLU in LAC NDCs

<i>Countries excluding AFOLU</i>	Countries including AFOLU with no details	Countries referring to specific AFOLU activities but no details	Countries detailing AFOLU activities but without emission reduction estimates	Countries giving full AFOLU details with emission reductions
<ul style="list-style-type: none"> • <i>Barbados</i> • <i>Cuba</i> • <i>Dominica</i> • <i>Trinidad and Tobago</i> • <i>Jamaica</i> • <i>St. Lucia</i> 	<ul style="list-style-type: none"> • Dominican Republic • Peru • Paraguay • St. Kitts and Nevis • El Salvador 	<ul style="list-style-type: none"> • Guatemala • Belize • Colombia • Costa Rica • Mexico • Suriname • Argentina • Venezuela • St. Vincent and Grenadines • Bahamas 	<ul style="list-style-type: none"> • Bolivia • Brazil • Ecuador • Grenada • Haiti • Honduras • Antigua and Barbuda 	<ul style="list-style-type: none"> • Chile • Uruguay • Guyana

Increasing AFOLU specification →

AFOLU in Asia NDCs (7 countries)



Source: <http://www.winrock.org/resources/role-agriculture-forestry-and-other-land-use-mitigation-indcs-and-national-policy-asia>

NDC conclusions



- AFOLU an important part of NDCs – especially in Africa
 - BUT often not fully articulated and scope for strengthening – especially in AFOLU
- Resources exist to help with NDC:
 - NDC Partnerships: <http://www.ndcpartnership.org/>
 - NDC Cluster: <https://www.ndc-cluster.net/>
 - Climat.be: <http://www.climat.be/fr-be/politiques/politique-belge/politique-federale/soutien-international/>
 - AfDB NDC Support Hub: <https://www.afdb.org/en/topics-and-sectors/initiatives-partnerships/africa-ndc-hub/>
 - AFOLU WG also fundraising for TA to help with AFOLU NDCs

Community of Practice

Discussion: AFOLU priorities for Africa



Topic → Sector ↓	GHG monitoring & reporting	Finance (public &/or private)	Private sector	Policy & enabling environment	Other?
Agriculture					
Restoration of degraded land					
Reforestation					
REDD+					
Deforestation free commodities					
Mangroves and wetlands					
Cross sectoral / rural LEDS					
Bioenergy					
Other?					

Contact us!

Email:

Robert.OSullivan@Winrock.org

Anna.McMurray@Winrock.org

Website:

http://ledsgp.org/working-groups/agriculture-forestry-and-land-use/?loclang=en_gb