

Mexico, 2017

Low emissions, resilient rural development – a planning framework

Anna McMurray

Ecosystem Services Unit

Winrock International



Background

- 2016 LEDS LAC Regional Workshop
 - Coherent rural LEDS framework identified as a need
- Study led by WI on the relationship between REDD+ and LEDS
 - The initiatives are not being developed in coordination
- Other rural LEDS planning frameworks
 - Only focus on land use



Objectives

- Propose a planning framework to promote low emissions, resilient rural development (rural LEDS)
- Ideas and information are welcome!

Five principles of rural LEDS



1. Socio-economic development



2. Social inclusion



3. Resilience to the impacts of climate change



4. Low GHG emissions



5. Sustainable management and conservation of natural resources

Five principles of rural LEDS



1. Socio-economic development



2. Social inclusion



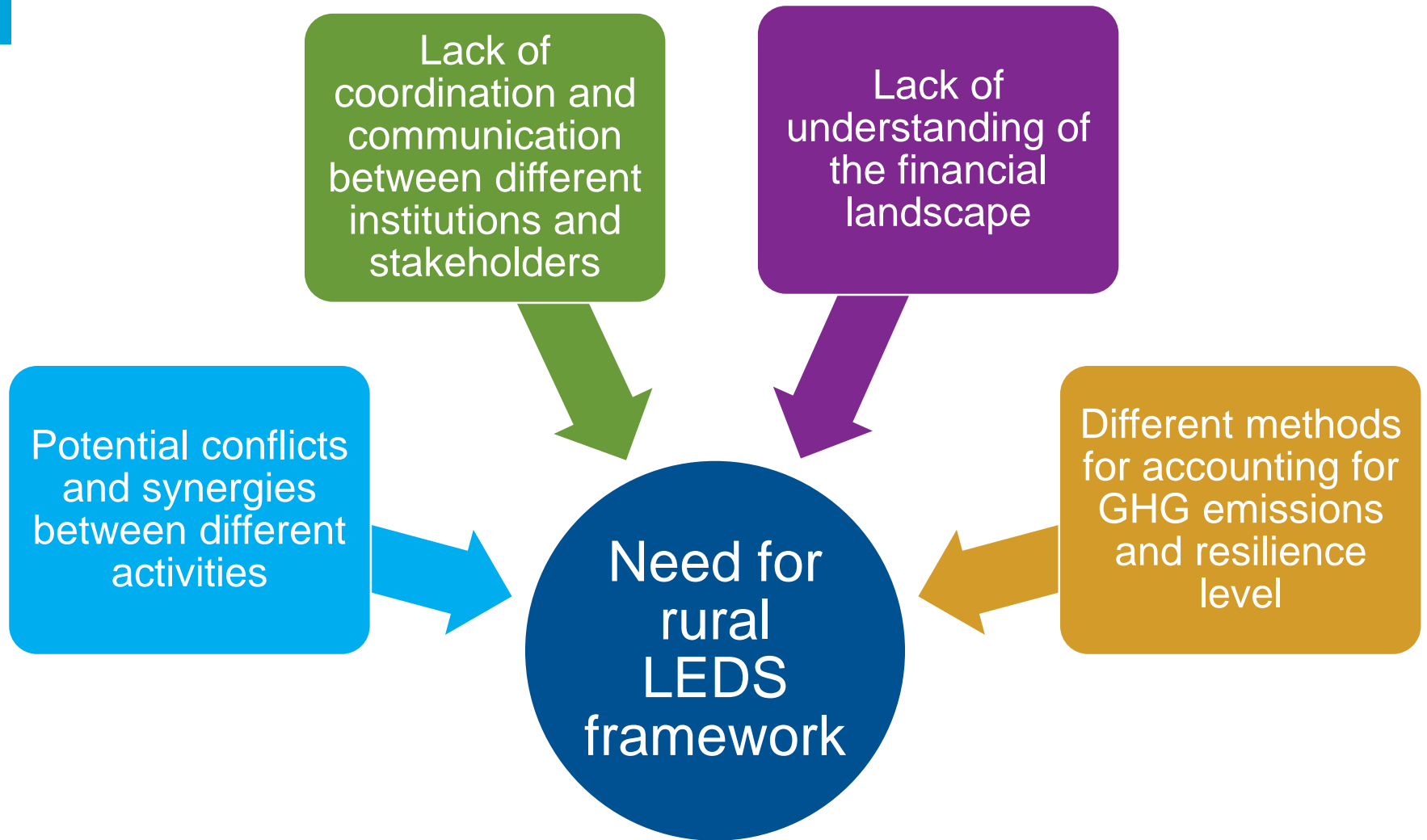
3. Resilience to the impacts of climate change



4. Low GHG emissions



5. Sustainable management and conservation of natural resources



What is included in rural LEDS?

- Land use
 - Agriculture
 - Forestry
 - Ecosystem management
 - Human communities
- Energy use
- Water management
- Waste management
- Transportation

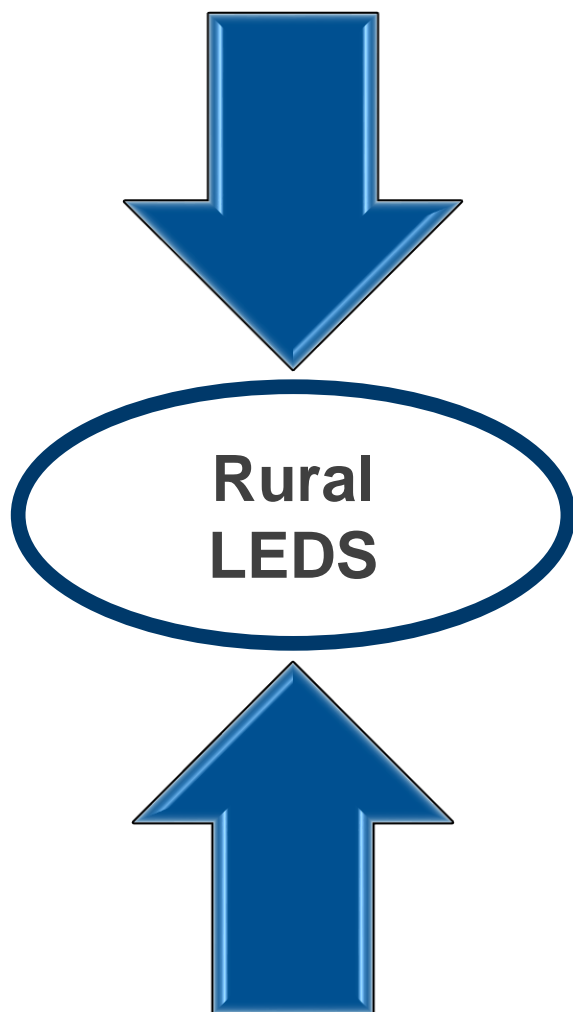


Important considerations

- Key components
 - Governance
 - Financing
 - Monitoring and evaluation of impacts
- Responsible entities
 - Decentralized: Different ministries?
 - Centralized: national planning committee?
- Scale
 - Regional



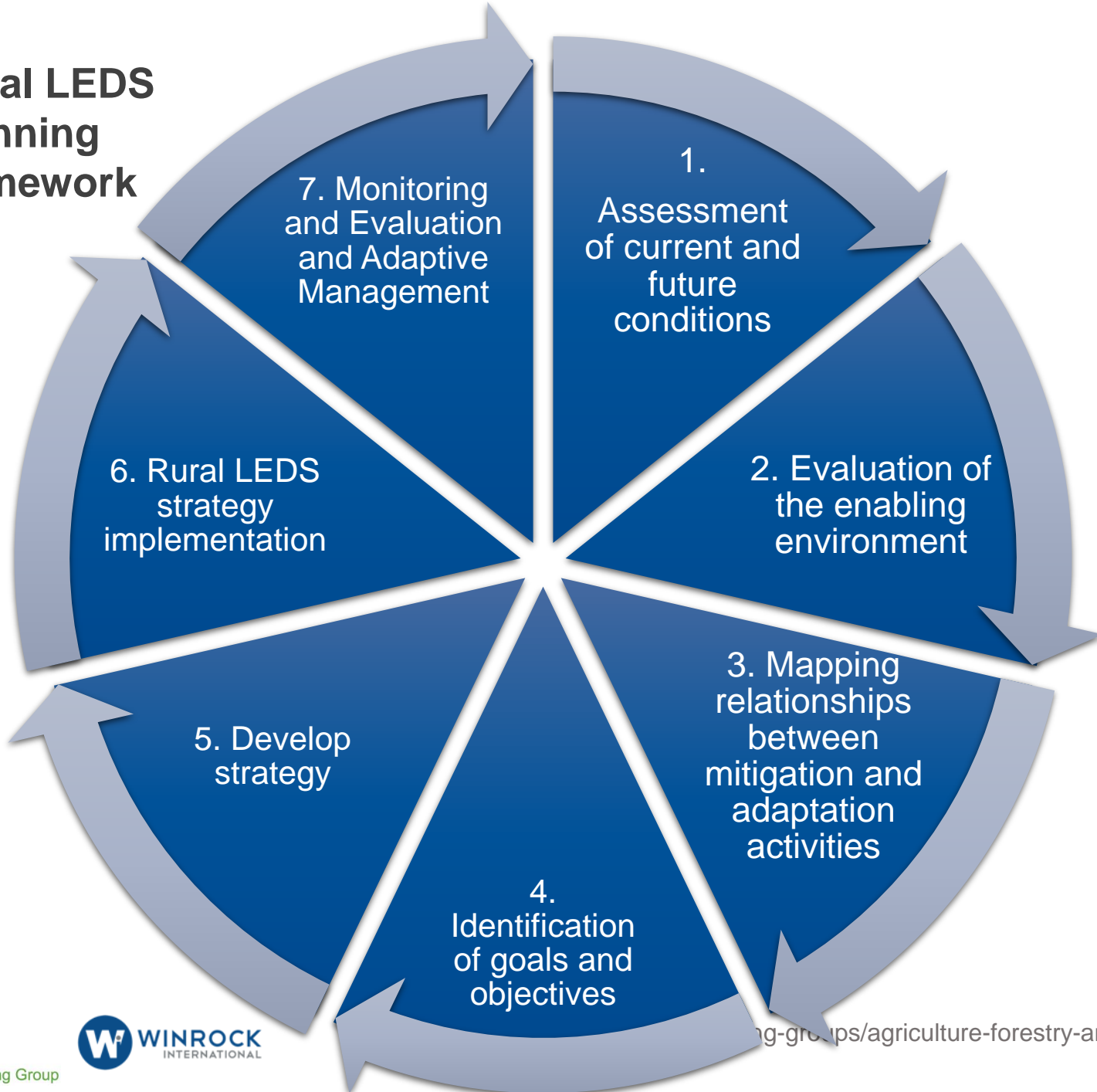
Bottom-up and top-down



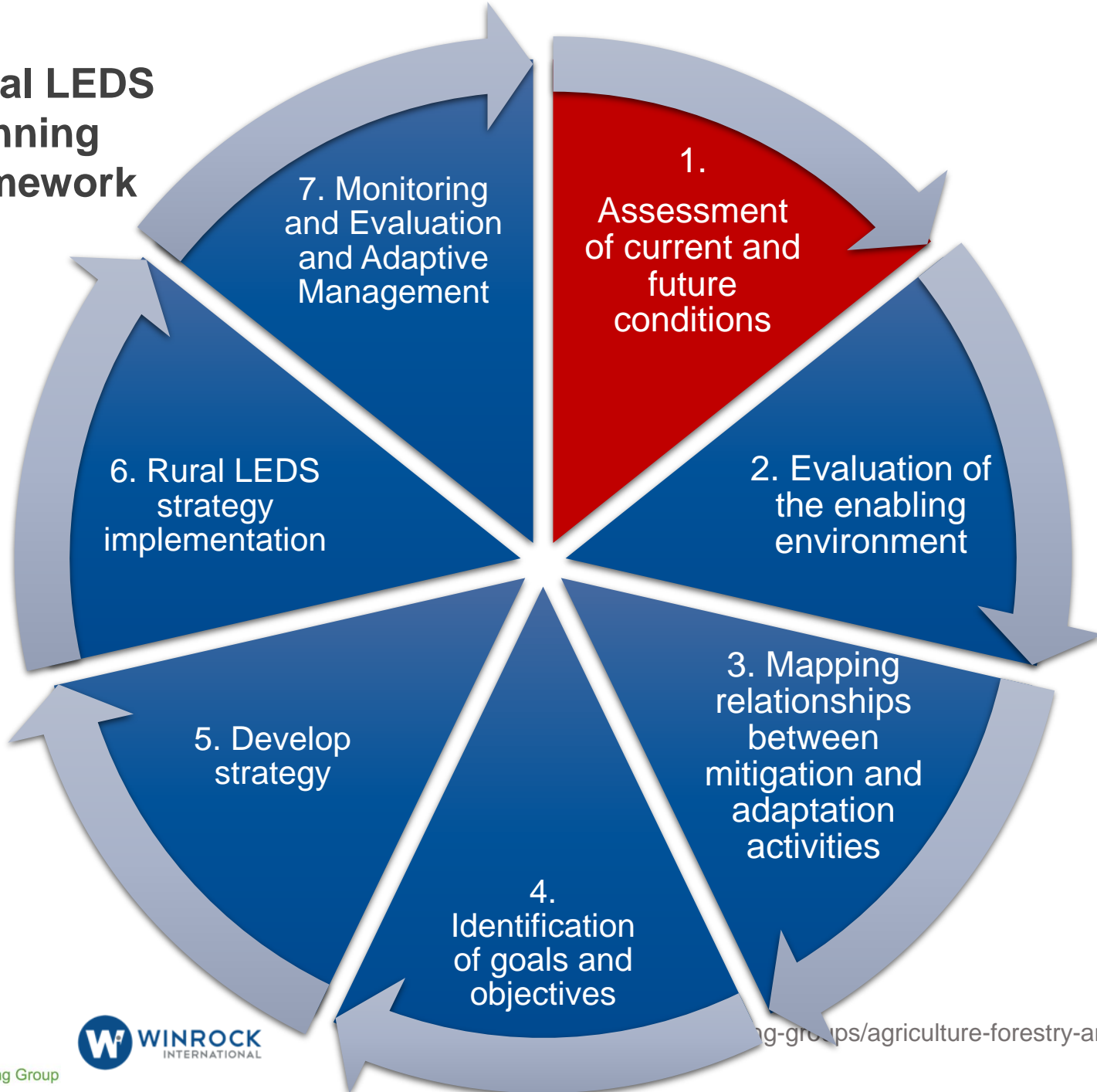
Based on international commitments, national development strategies, laws and regulations, etc.

Informed by local stakeholders and circumstances

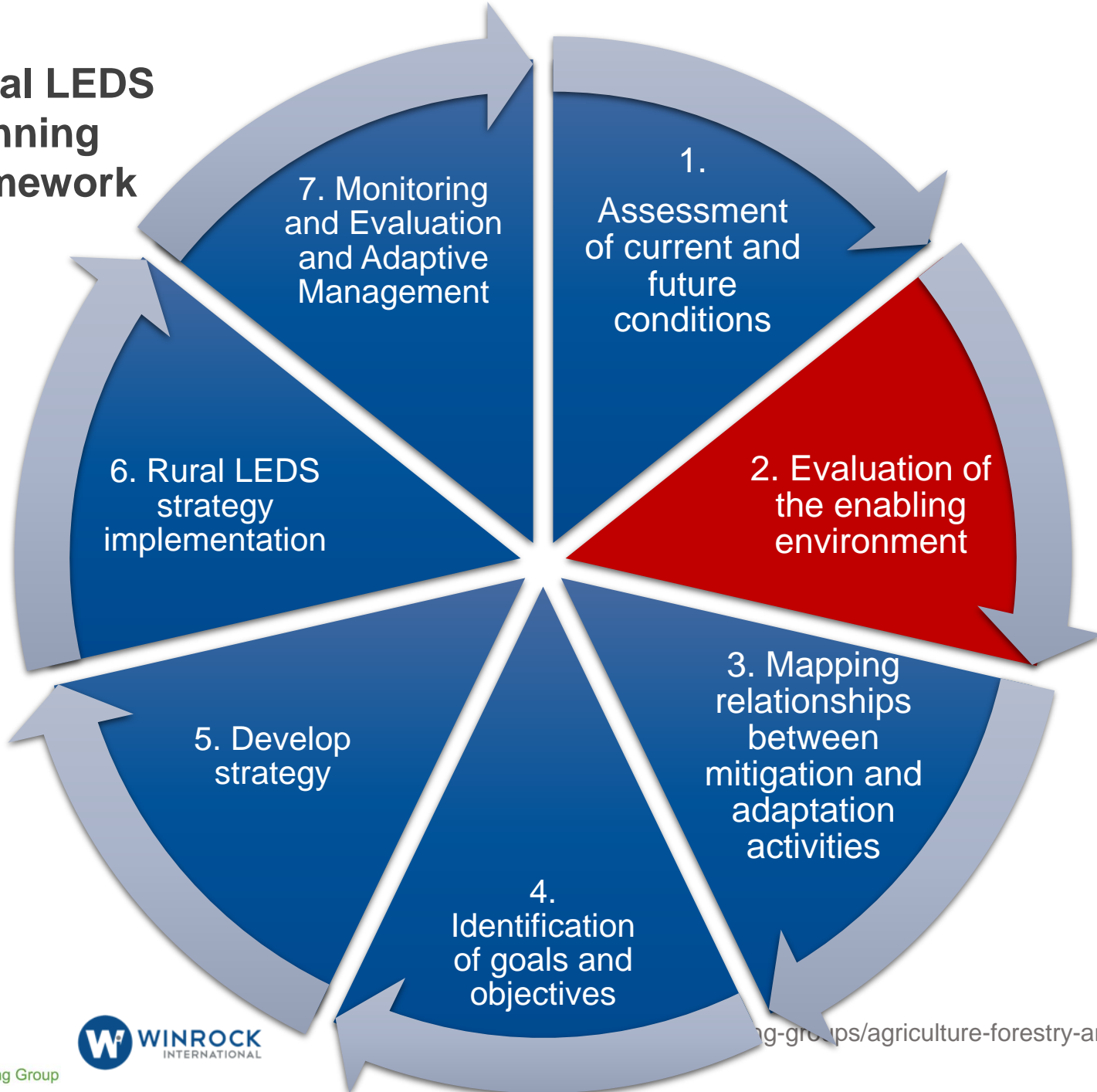
Rural LEDS planning framework



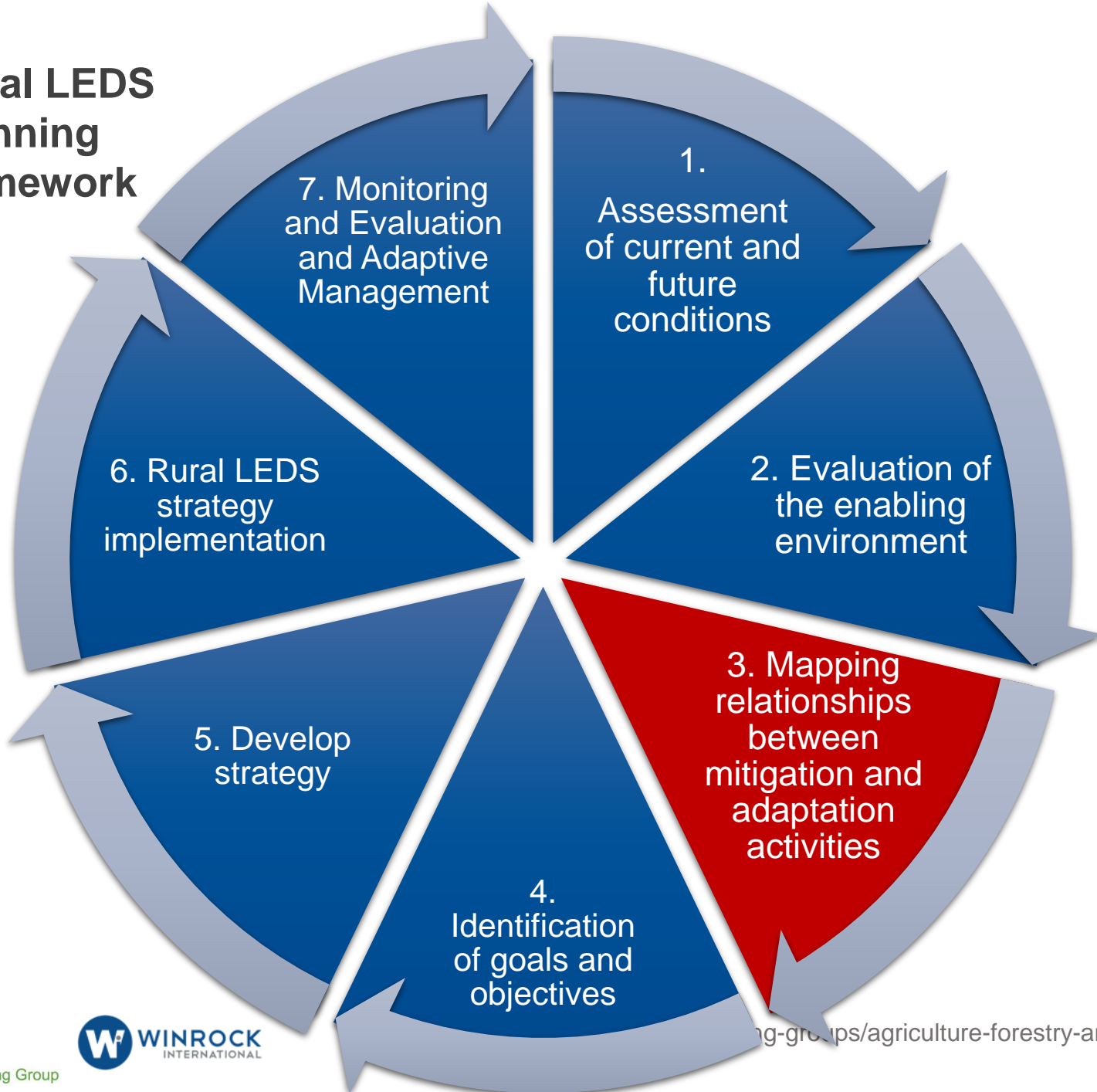
Rural LEDS planning framework



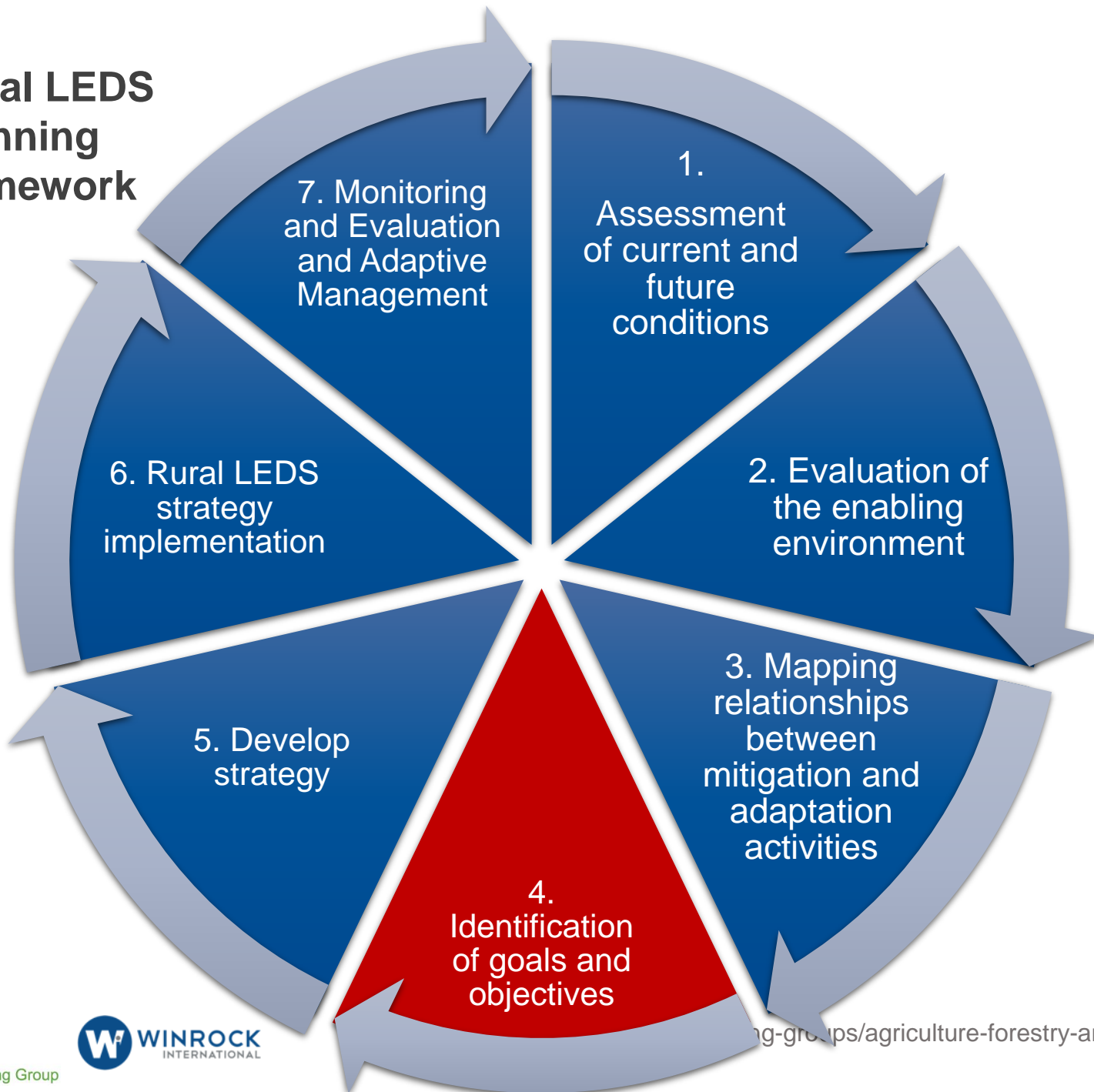
Rural LEDS planning framework



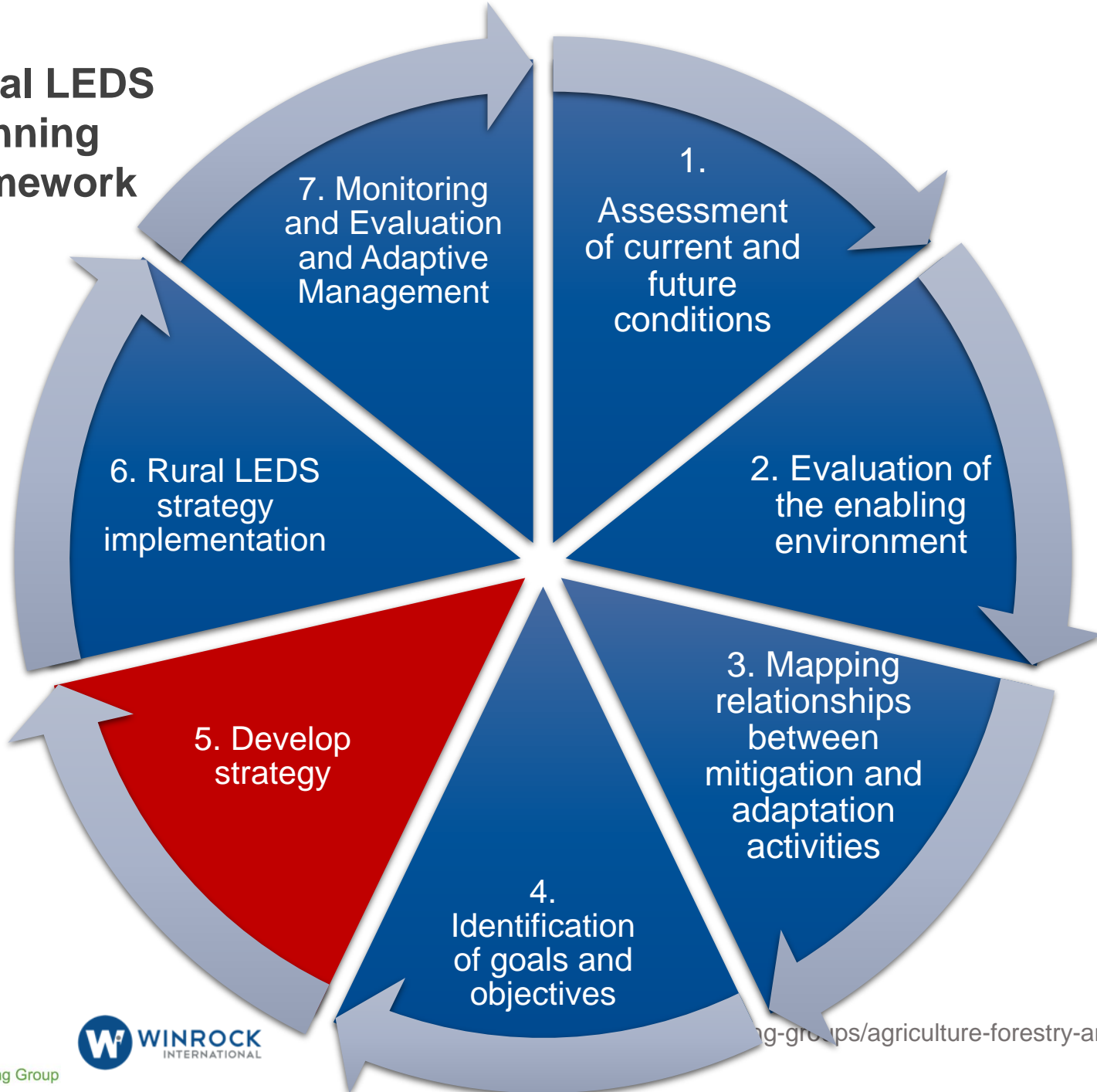
Rural LEDS planning framework



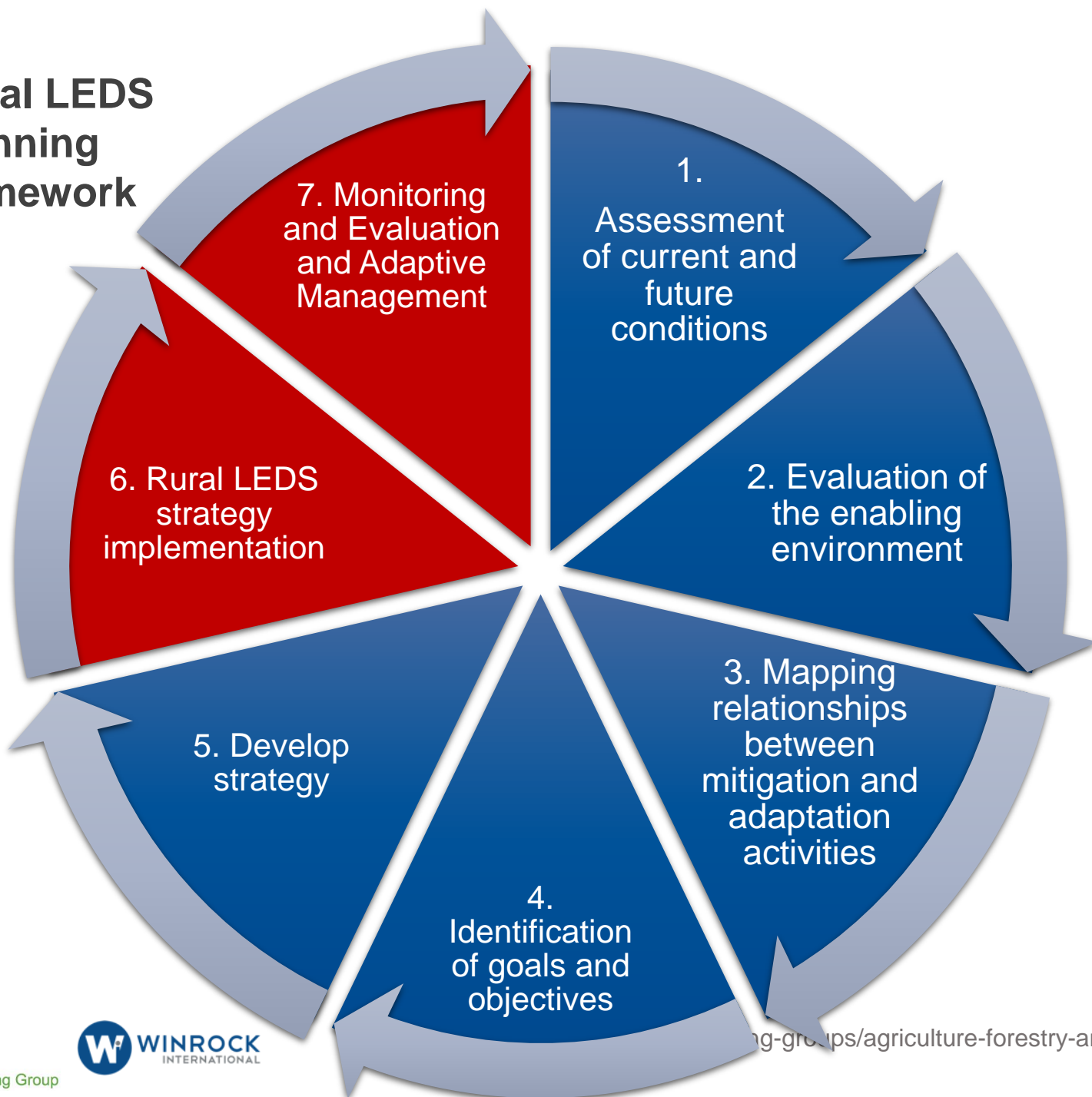
Rural LEDS planning framework



Rural LEDS planning framework



Rural LEDS planning framework



Specific considerations in rural landscapes

- Stakeholders
 - Indigenous peoples
 - Local communities
 - Agroindustrial, hydroelectric, forestry, mining companies
- Remote and sparsely populated areas
 - Underserved in terms of resources and finances
- Land tenure issues
- Others?



Bibliography

Barber J, Stephen P, Saah D, Phuong CP. 2015. Guidance on Low Emission Land Use Planning. developed by the USAID Lowering Emissions in Asia's Forests (USAID LEAF) program and the United States Forest Services (USFS) International Program. <http://www.leafasia.org/library/guidance-low-emission-land-use-planning>.

McMurray, A., Casarim F.M., O'Sullivan, R., Andrasko, K. 2017. The Relationship between LEDS and REDD+: Case studies from Peru and Guatemala. Prepared by LEDS GP's AFOLU Working Group led by Winrock International, with the contribution of LEDS LAC Secretariat. Available at: <http://ledslac.org/wp-content/uploads/2017/04/Relationship-between-LEDS-and-REDD.pdf>

Nepstad DC, Boyd W, Stickler CM, Bezerra T, Azevedo AA. 2013. Responding to climate change and the global land crisis: REDD+, market transformation and low-emissions rural development. Phil Trans R Soc B 368: 20120167. <http://dx.doi.org/10.1098/rstb.2012.0167>.

Sustainable Tropics Alliance. Sin fecha. Fostering low-emission rural development from the ground up. http://earthinnovation.org/publications/fostering_led-r_tropics-pdf/.

Thank you!

Anna.McMurray@winrock.org



ledsgp.org/working-groups/agriculture-forestry-and-land-use



winrock.org



[/winrockinternational](https://www.facebook.com/winrockinternational)



[@WinrockIntl](https://twitter.com/WinrockIntl)



[/company/Winrock-International](https://www.linkedin.com/company/Winrock-International)



[winrock_international](https://www.instagram.com/winrock_international)