

Big Data Analytics and Transboundary Water Collaboration for Southern Africa

SADC Groundwater Information Portal

Arnaud Sterckx

International Groundwater Resources Assessment Centre (IGRAC)

in 2010

SADC Hydrogeological Mapping Project (SADC et.al., 2010)

The screenshot shows a web browser window with the URL <https://web.archive.org/web/20111222040006/http://www.sadc-hgm.com/>. The website has a blue and orange header with the SADC logo and the title "Hydrogeological Map & Atlas". A navigation bar contains links: Home, Overview, Brochure, Procedures, Map & Atlas, Links, and Contact Us. Below the navigation bar, there are two small images on the left: one showing people at a water pump and another showing a body of water. To the right of these images is the "Preface" section, which contains the following text:

Preface

The Southern African Development Community (SADC) hydrogeological map and atlas provides an overview of the groundwater resources of the SADC region by means of an interactive web-based regional map.

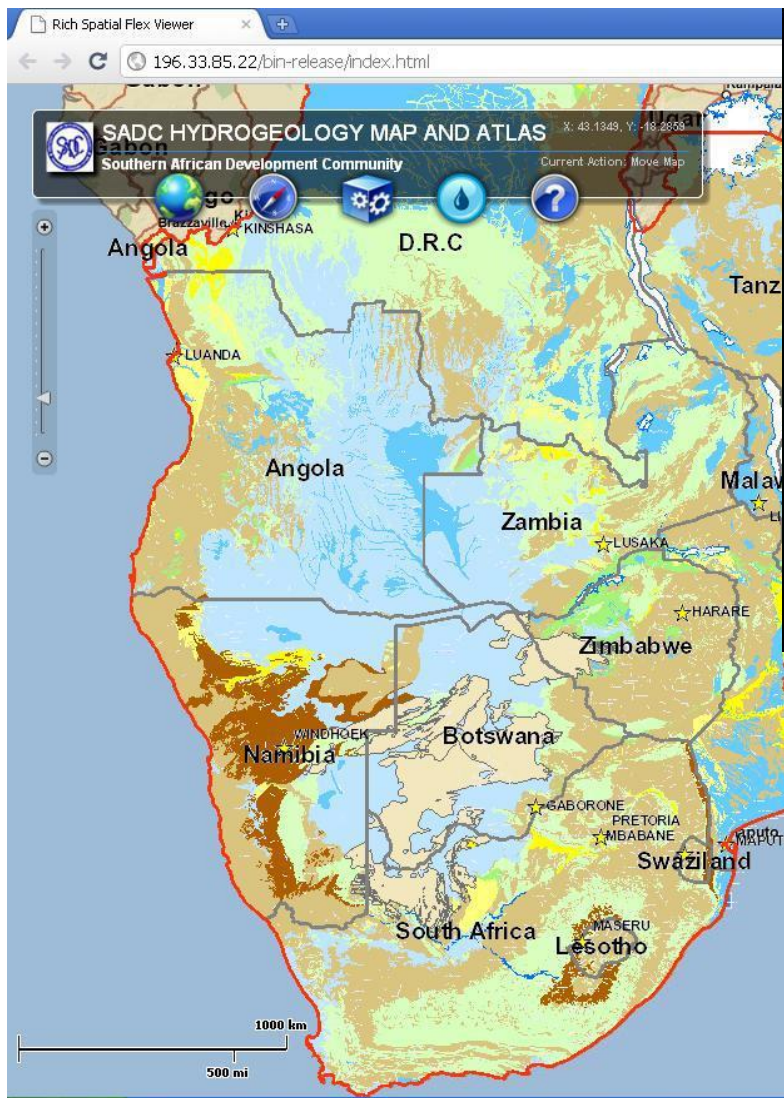
The map and atlas is a general hydrogeological map providing information on the extent and geometry of regional aquifer systems. The map is intended to serve as a base map for hydrogeologists and water resource planners, whilst at the same time presenting information to non-specialists.

The compilation of the SADC hydrogeological map took place during the period 1 June 2009 to 31 March 2010. The consultancy was awarded to a consortium consisting of Sweco International (Sweden), Council for Geoscience (South Africa), Water Geosciences Consulting (South Africa) and Water Resources Consultants (Botswana). Sweco was the lead consultant.

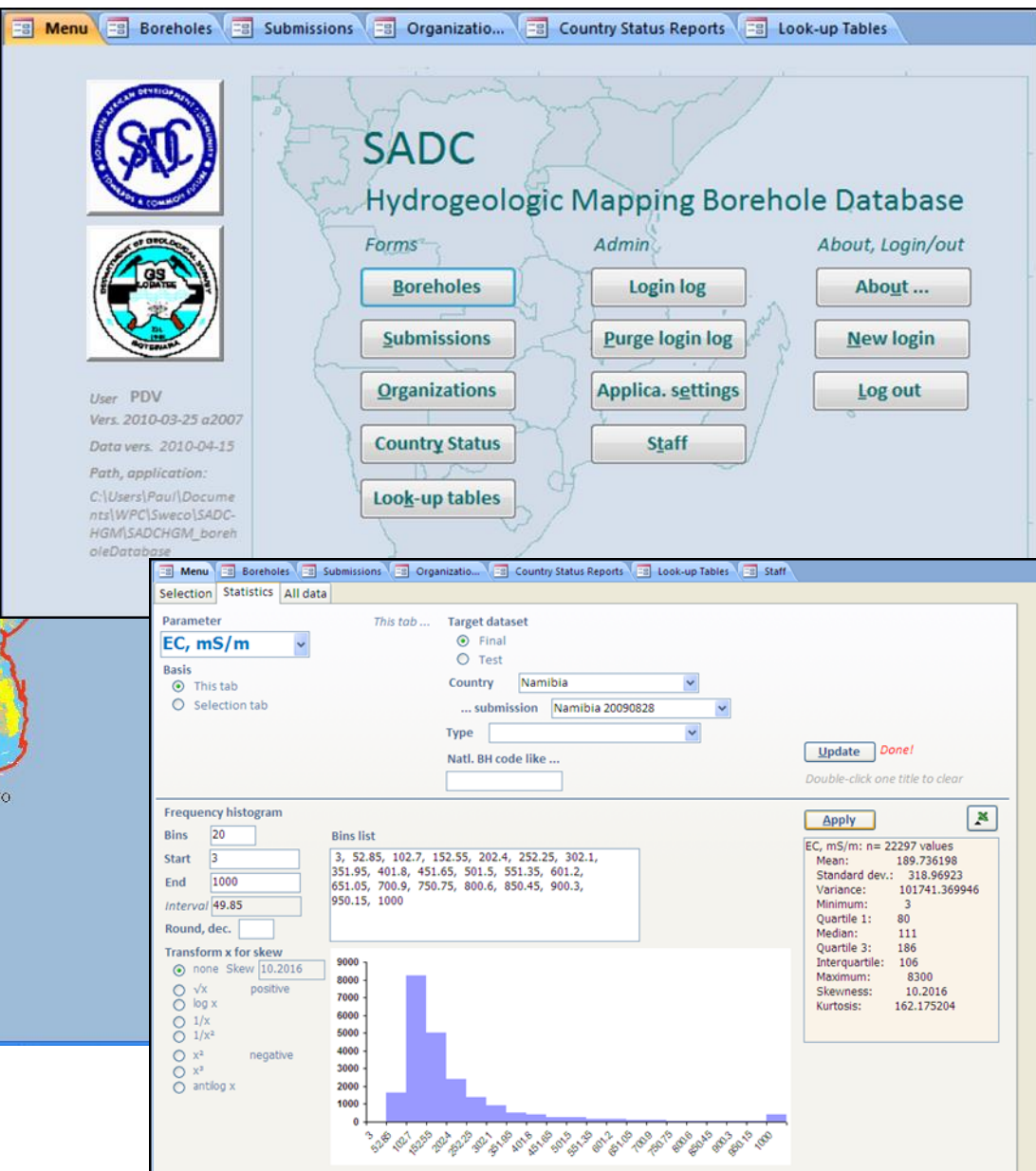
The project implementation agent (PIA) was the Department of Geological Survey (DGS), Botswana.

The overall objective of the project was to improve the understanding of groundwater occurrence within the SADC region

<https://web.archive.org/web/20111222040006/http://www.sadc-hgm.com/>
Status: January 2012



Screenshot of original SADC-HGM web application (source: SADC et.al., 2010)



Big Data Analytics and Transboundary Water
Collaboration for Southern Africa
Data Storage Solution Workshop, 21/04/2020



in 2014

賃貸契約と退去の話～原状回復ってどこまで必要？～

このサイトでは、賃貸物件の原状回復について、平易な言葉でまとめています。

コンテンツ一覧

- 敷金の意義を考える
- 貸す側の範囲
- 借り側の範囲
- 経年劣化とは何か
- 賃貸契約でも特約
- 揉め事は消えない
- 物件情報を見つけよう
- 何事も契約
- 経済と賃貸の動向
- 運営者情報/免責事項

退去と原状回復

自由に生活したいというの
もっとも、今の時代では、
ないということもあります
現実化するためにも、それ
しかし、自由で暮らせるこ
それを実現するために

Wayback machine – Internet archive
<https://web.archive.org>

in 2017

gip.sadc-gmi.org

GROUNDWATER INFORMATION PORTAL


Catalog

- Geography
- Hydrology and climate
- Aquifers
- Borehole data
- SADC groundwater drought risk
- Country-based information
- WHYMAP - Groundwater Resources of the World (2017)
- WHYMAP - Global Groundwater Vulnerability to Flooding (2017)
- WHYMAP - World Karst Aquifer Map (2017)
- Other maps
- Background maps

Active layers

- ☒ MapBox

SADC Groundwater Information Portal




GROUNDWATER MANAGEMENT INSTITUTE
GROUNDWATER INFORMATION PORTAL

SADC Groundwater Information Portal (SADC GIP)
This map viewer gives access to the SADC Hydrogeological map and atlas. The viewer contains a harmonised hydrogeological map for the SADC region, and borehole data from SADC member states. The viewer is designed to provide easy access to this information for all those who are involved in groundwater management, groundwater development and research related to groundwater.

The data contained in this viewer originates from the 2010 SADC Hydrogeological Mapping project (SADC-HGM). No additional quality checks were performed and data should be used with caution. SADC-GMI and IGRAC accept no responsibility for the accuracy of the data.

Data in this public viewer is available for on-line viewing only. Requests for access to the underlying data files should be addressed to the SADC Groundwater Management Institute info@sadc-gmi.org.

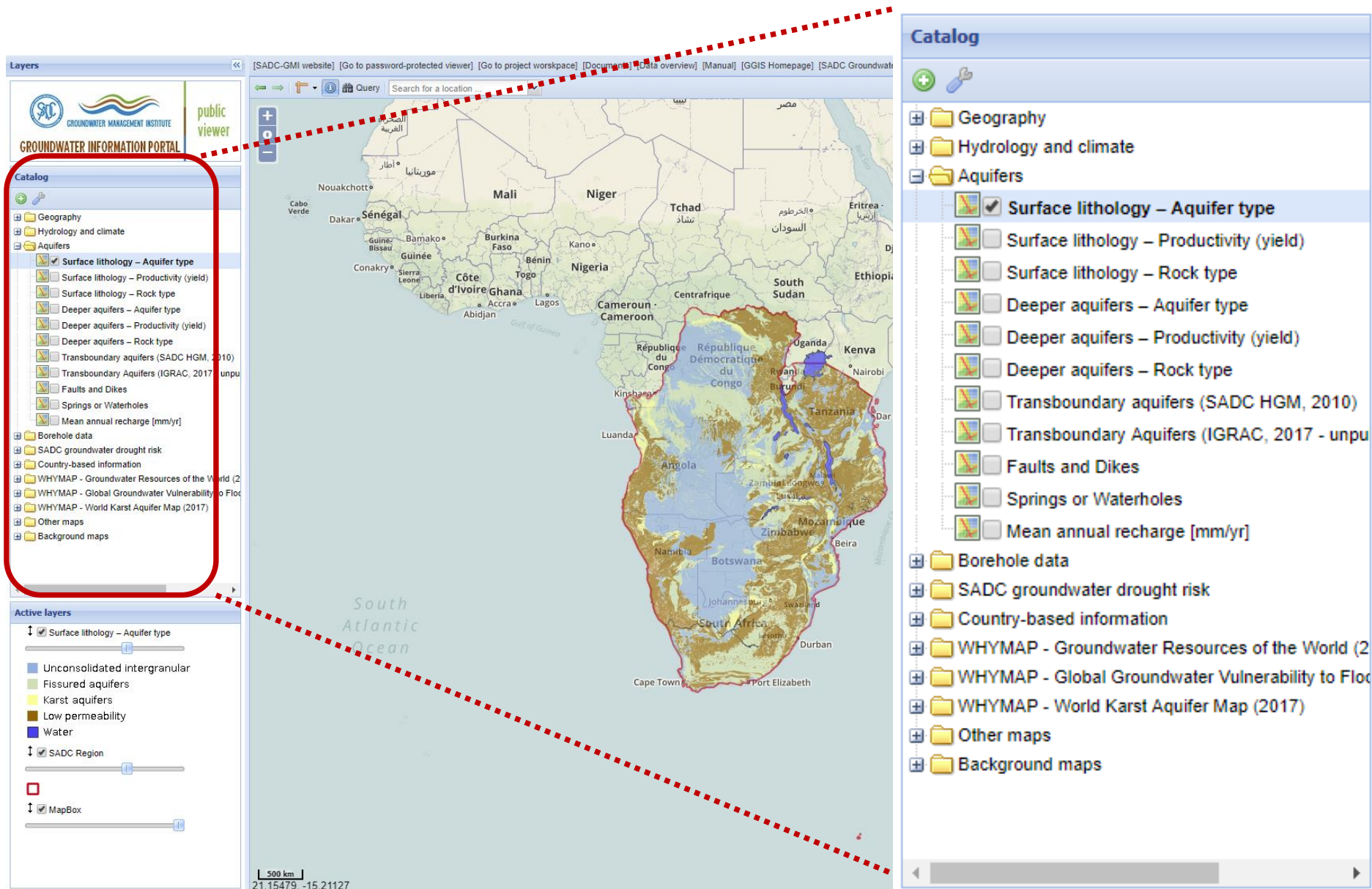
The SADC-GIP is developed and maintained by the International Groundwater Resources Assessment Centre (IGRAC), on behalf of SADC-GMI.

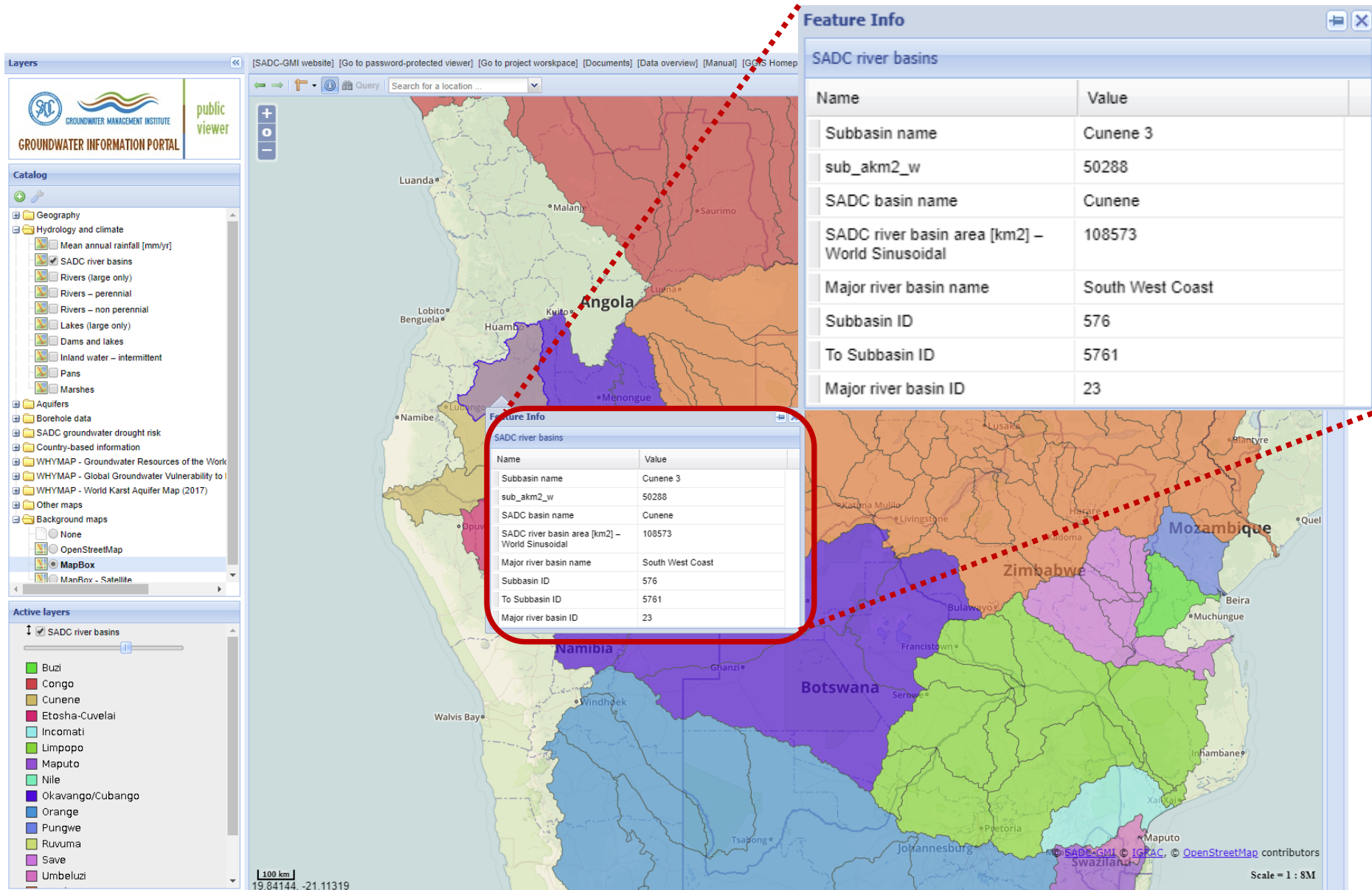


500 km
91.03516, 4.90356

© SADC-GMI © IGRAC, © OpenStreetMap contributors

Scale = 1 : 34M





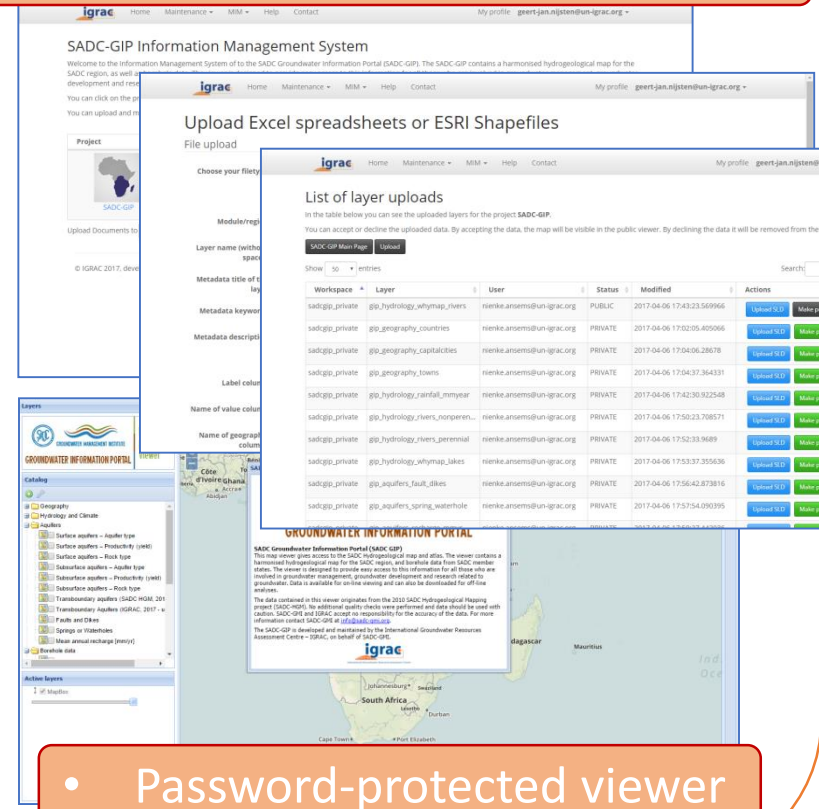
Public and password-protected viewers

ANYONE with internet access:



REGISTERED & AUTHORISED users:

- Password-protected workspace



in 2020

sadc-gip.org



Data ▾ Maps About ▾

Q Search

Register Sign in

SADC Groundwater Information Portal



GROUNDWATER MANAGEMENT INSTITUTE

The SADC Groundwater Information Portal (SADC-GIP) is a platform for sharing groundwater-related data and information in the SADC region. It includes the maps from the 2010 SADC Hydrogeological Mapping project (SADC-HGM), among others. Organisations and individuals are invited to register and share relevant groundwater data and information in the SADC-GIP. Providing easy access to groundwater data and information is key to allow all stakeholders to actively participate in the sustainable management of groundwater resources in the SADC region. The SADC-GIP is managed by the SADC Groundwater Management Institute.

Search for Data.

Q Search

Advanced Search





Data ▾

Maps

About ▾

Q Search

Register

Sign in

Explore Layers

Upload Layers

Selected Layers

Add layers through the "checkboxes".

Create a Map

Filters

Clear

▼ TEXT

Search



► KEYWORDS

▼ TYPE

Vector Layers

4

► CATEGORIES

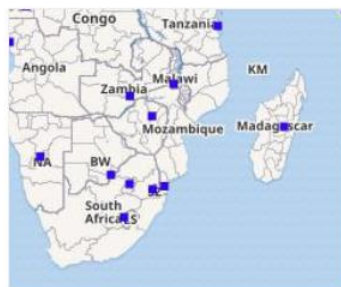
► RESPONSIBLES

► GROUPS

► GROUP CATEGORIES

4 Layers found

11 ▾



ECONOMY

REGISTERED MEMBERS

capital_cities

No abstract provided

Kartoza KartozaGeo

20 Apr 2020

0

0

0

Create a Map



countries0

No abstract provided

SADC-GMI Administrators

16 Apr 2020

2

0

0

Create a Map

• Shapefile

• GeoTiff



[Data](#) ▾[Maps](#)[About](#) ▾[Register](#)[Sign in](#)

Explore Documents

[Upload Documents](#)

Selected Documents

Add documents through the "checkboxes".

1 Documents found

🔍 ▾



ECONOMY

👤 REGISTERED MEMBERS



Upload Documents

Allowed document types:

.doc .docx .gif .jpg .jpeg .ods .odt .odp .pdf .png .ppt .pptx .rar .sld .tif .tiff .txt .xls .xlsx .xml .zip .gz .qml

Presentation

➤ CATEGORIES

➤ RESPONSIBLES

➤ GROUPS

➤ GROUP CATEGORIES

➤ DATE

➤ REGIONS



[Data](#) ▾[Maps](#) ▾[About](#) ▾[ggis@un-igrac.org](#) ▾

Explore Maps

[Create a New Map](#)

Selected Maps

Add maps through the "checkboxes".

Filters

[Clear](#)

▾ TEXT



▸ KEYWORDS

▸ CATEGORIES

▸ RESPONSIBLES

▸ GROUPS

▸ GROUP CATEGORIES

▸ DATE

▸ REGIONS

▸ EXTENT

4 Maps found

🔍 1 ▾



📖 Map

combined layers

👤 Kartoza KartozaGeo

📅 20 Apr 2020

👁 0

🔄 0

★ 0

📍 View Map



📖 Map showing cities in Africa

Demo

👤 Kartoza KartozaGeo

📅 20 Apr 2020

👁 0

🔄 0

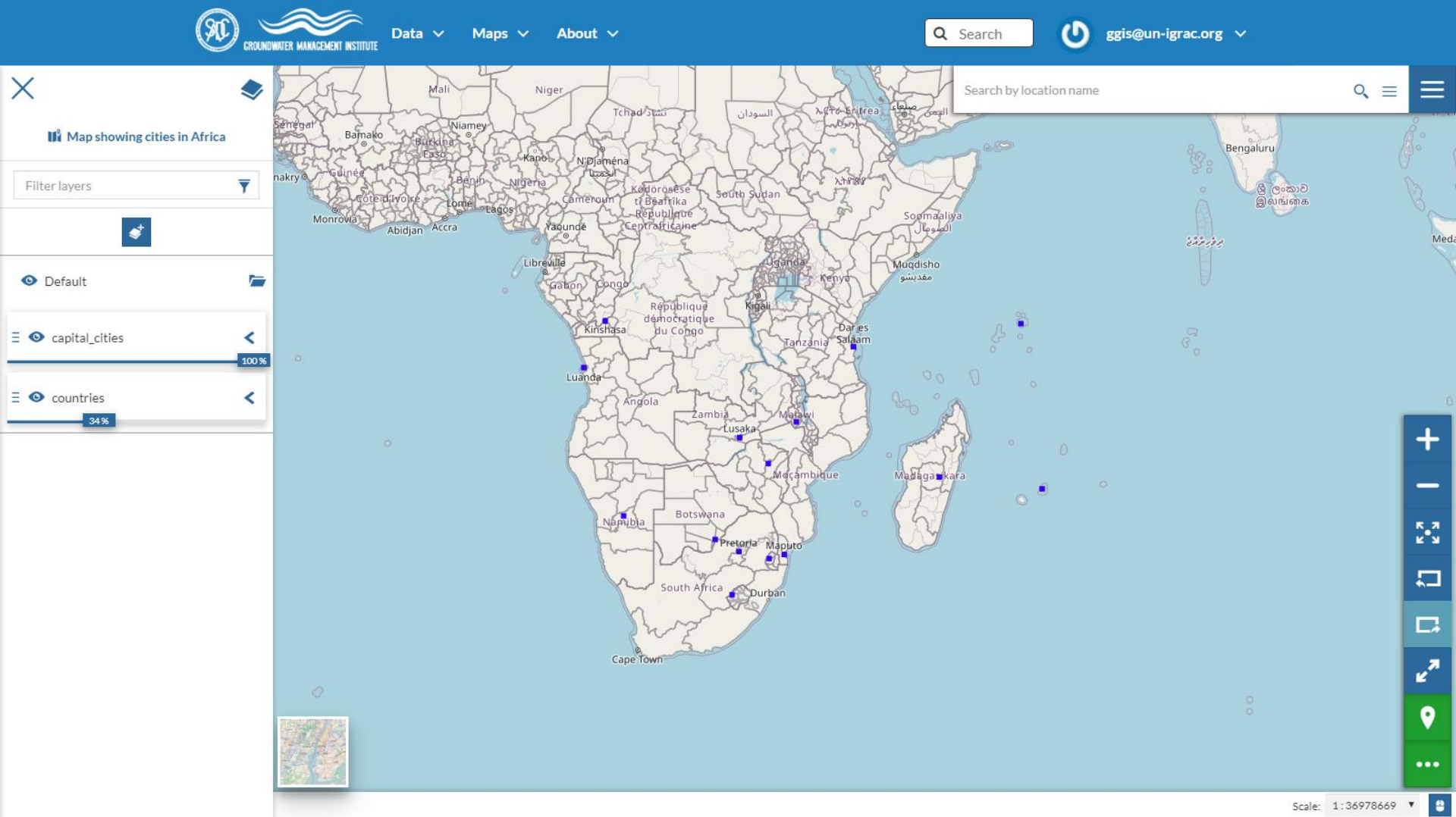
★ 0

📍 View Map



📖 time series test






Big Data Analytics and Transboundary Water
Collaboration for Southern Africa
Data Storage Solution Workshop, 21/04/2020

Management of permissions among users and user groups

1

Basic Metadata

Thumbnail



2

Location and Licenses

Title ?

countries0

Abstract ?

No abstract provided

3

Optional Metadata

Free-text Keywords ?

× features × countries ×

Date type ?

Publication

Date

2020-04-16 19:4

Category

4

Dataset Attributes

1

Basic Metadata

Language ?

English

License ?

Not Specified

DOI ?

None

2

Location and Licenses

Regions

× Global

Data quality statement ?

None

3

Optional Metadata

Restrictions ?

* Field declared Mandatory by the Metadata Schema

Restrictions other ?

None

4

Dataset Attributes

- Possibility for linkages with other data sharing platforms using OGC standards

Remote Services

[Register a new Service](#)

Title	URL	Type
GeoNode Local GeoServer 	https://master.demo.geonode.org/geoserver/ows	GeoNode (Web Map Service)

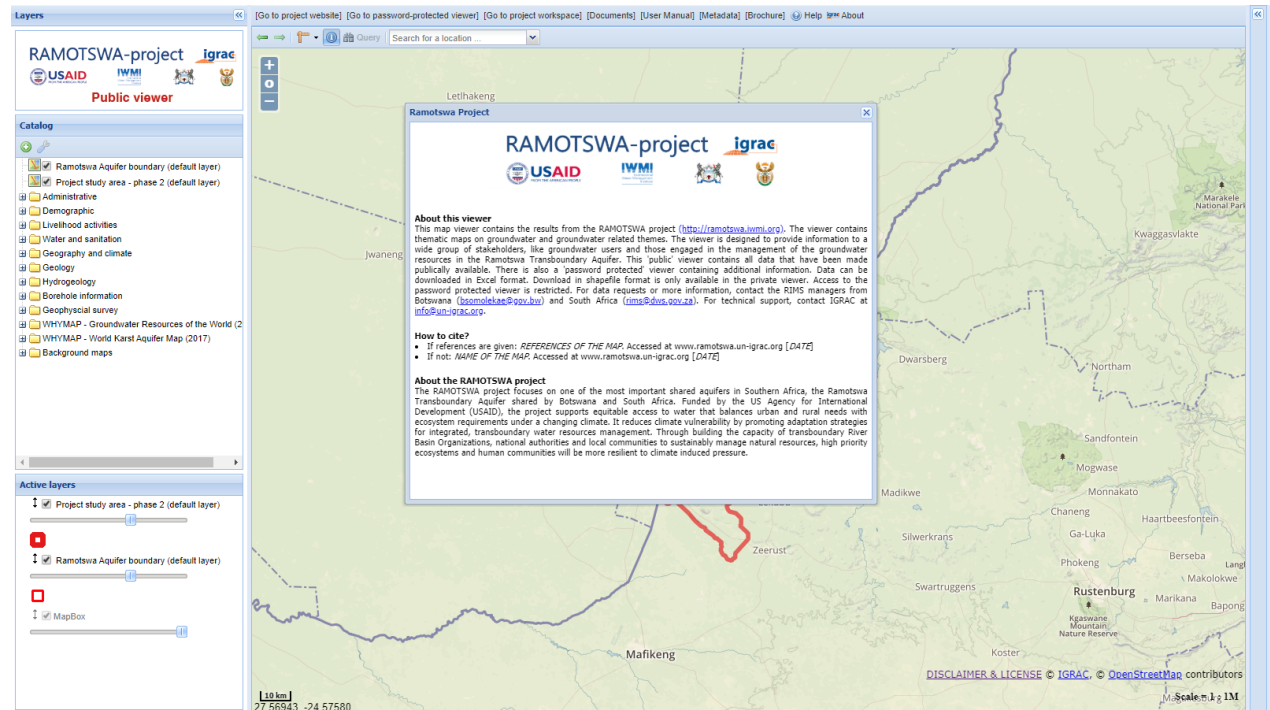
- Possibility for linkages with other platforms in the main page
- GeoNode is “free” and open-source

But...

- Not meant for sharing big files (terabytes)

Next steps

- Migrate data from the current SADC-GIP
- Migrate data from RIMS
- Train partners in the SADC region



→ Function as a one-stop point for accessing groundwater data and information in the SADC region